

# Robin Syme

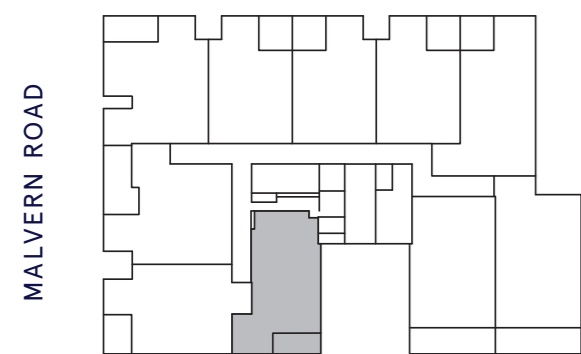
Malvern

Residences by mecwacare

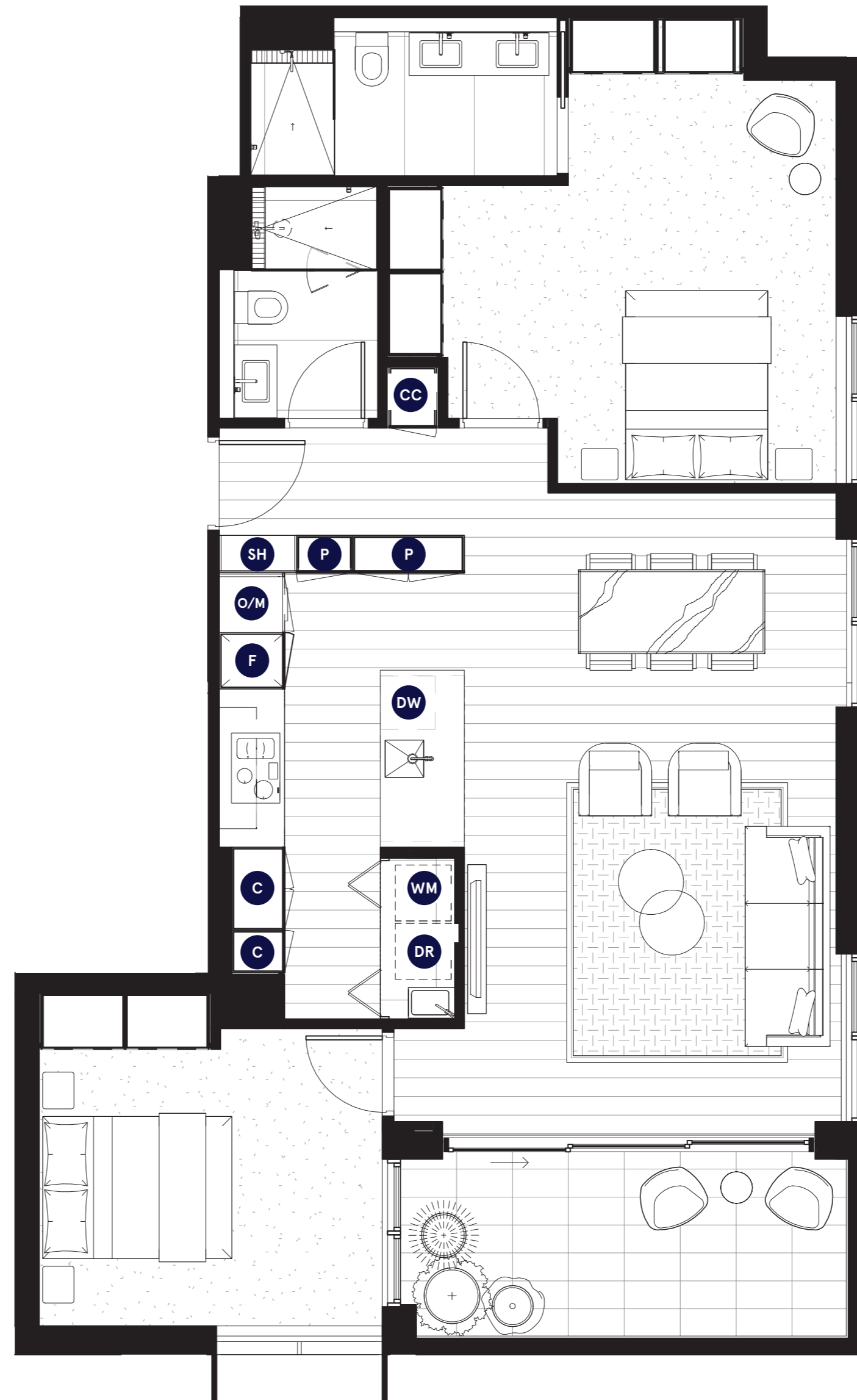
## RESIDENCE 206

Bedrooms	2
Bathrooms	2
Internal	95.5m <sup>2</sup>
External	10.5m <sup>2</sup>
Total	106m <sup>2</sup>

- C Cupboard
- CC Coat Cupboard
- DR Dryer
- DW Dishwasher
- F Fridge
- O/M Oven/Microwave
- P Pantry
- SH Shelf
- WM Washing Machine



Level Two



Note. All areas shown are approximate. The information contained herein has been obtained from sources we believe to be reliable and therefore have no reason to doubt it's accuracy. The vendor and it's agent will not be responsible for any error or mis-description which may appear. Prospective purchasers or leasees are therefore advised to make whatever investigations they deem necessary.